

CWDM Channel Analyzer

F
T
E
8
0
0
0
C
W
D
M



Features:

- Pass/Fail Thresholds and Drift Statistics
- Available in 8 or 18 Channels
- Fast Real Time with <1/2 second Update
- Video Inspection Scope (Probe Sold Separately)
- Bar Graph and Table Displays
- Auto Test Zooms in on Active Channels
- Rugged Case w/Impact Resistant Boot
- Solid State Optics-No Moving Parts
- Easy Operation with Help Mode
- 4" Color Display
- 8hr Battery Life
- Impact Resistant Boot
- Stores 1000 test
- USB/PC and USB Flash ports

We also offer the FTE8000-C or - L DWDM Handheld Optical Spectrum Analyzer

The FTE-8000-CWDM is a simple to operate and affordable full featured CWDM Channel Analyzer. It is designed to be rugged and is well suited for use in the field. The FTE-8000 is available in 8 or 18 channels and offers a power tilt feature. With its one button Auto Test feature, and a full set of selectable scale limits and thresholds, the FTE-8000-CWDM makes zeroing in on channel measurements easy. For flexibility the channel numbers are selected in wavelength or frequency and the information is displayed in graph or table mode on the 4 inch, high brightness color LCD. This unit allows users to set Pass/Fail thresholds and can store up to 1000 tests that can be downloaded via the USB PC or USB flash ports and documented with the included certification software for fast, easy reporting. Use the onboard Video Inspection Scope to ensure connector cleanliness prior to testing. The onboard Help system guides new users through operation and assists in parameter settings. The FTE-8000CWDM is housed in a rugged metal enclosure with a robust protective boot. To make transportation easy and save, a soft case with shoulder strap is available.



Made In the USA

Terahertz Technologies Inc.
169 Clear Rd, Oriskany NY 13424
888-U.S.-OTDRS (876-8377)
Phone: 315-736-3642 Fax: 315-736-4078
email: sales@teratec.us
web: www.teratec.us

©07/2014 Terahertz Technologies Inc.

FTE-8000-CWDM Specifications:

| | |
|----------------------------|---|
| Wavelength Range | 18 Channel 1271-1611nm 8 Channel 1471-1611nm |
| Channel Spacing | 20nm |
| Channel Pass Band | ±6.5nm |
| Channel Power Range | +5dBm to -50dBm |
| Absolute Accuracy | ±1 dB |
| Max Composite Power | +23dBm |
| PDL | ±0.2dB |
| Adjacent Channel Isolation | 30dB |
| Measurement Time | < 1/2 Second |
| Readout Resolution | 0.01dB |
| Return Loss | >40dB |
| Optical Interface | Universal UPC (FC/SC) |
| Graphical Display | Bar Graph and Table View |
| Display | 4 in Color TFT |
| Dimensions | 7.75 x 4.5 x 2.25 inches |
| Weight | 2 lbs |
| Battery | Rechargeable NiMH - 8 hours operating time |
| Power | 100-240 universal US, GB, EU, AU Mains |
| Environmental | Operation -10°C to 50°C |
| Accessories Included | Universal power supply with mains for US, UK, CE and AU. Interchangeable FC and SC adapters, Certsoft Reporting Software Suite, USB cable, manual on CD and rubber boot |

TTI reserves the right to change specifications without notice.

Ordering Information

| | |
|----------------|---|
| FTE-8000CWDM | CWDM Channel Analyzer |
| FTE-8000CWDM-8 | 8 Channel CWDM Analyzer |
| FTE-SCASE-LG | Soft Case for FTE-6000, 7500, FTE7800 and 8000 Series |

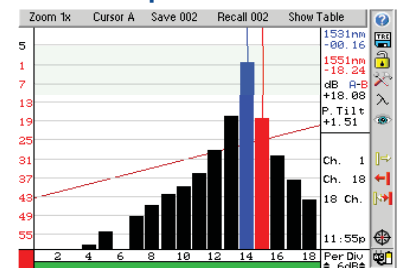
Table View

| Return | Min=-3.10dBm | Max=+5.00dBm | | | |
|--------|--------------|--------------|--------|----|--------|
| 01 | -02.71 | 07 | -02.14 | 13 | -01.89 |
| 02 | -01.58 | 08 | -02.43 | 14 | -02.59 |
| 03 | -01.63 | 09 | -03.13 | 15 | -01.47 |
| 04 | -02.05 | 10 | -01.90 | 16 | -01.76 |
| 05 | -02.38 | 11 | -03.18 | 17 | -02.49 |
| 06 | -01.95 | 12 | -01.82 | 18 | -02.02 |

Max: -1.90 Min: -9.85 Avg: -2.00

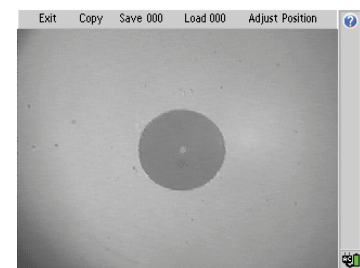
In the table view, the FTE-8000 displays failed channels in red and when a channel is highlighted, statistical information is displayed including the minimum, maximum and average power levels.

Graphical View



The FTE-8000-CWDM graph display can be configured to optimize the test view. The user can zoom in on specific channels, mark the display area in which channels meet power criteria, limit the number of overall channels viewed and as shown here display power tilt indicator.

Video Scope



The FTE-8000-CWDM will accommodate the TTI CI1100 Video Probe allowing the user to visually check connectors for cleanliness and damage prior to testing. This helps eliminate costly repairs to the fiber optic connects on the FTE-8000 and results in more accurate tests.



Made In the USA

TTI makes every effort to insure all statements and information for the products referred to in this document are accurate and reliable. TTI can not accept any responsibility for errors, omissions or miss statements, nor can they accept responsibility for any actions taken based on the information demonstrated herein. TTI reserves the right to make changes of any kind to the product referred to in this document without prior notice.
© 07/2014 Terahertz Technologies Inc.